

PART OF E 1/2 SEC. 17, T.5N., R.1W., S.L.B. & M.
SOUTHRIDGE SUBDIVISION NO. 4

LOTS 65-69, 88-93

IN WASHINGTON TERRACE CITY

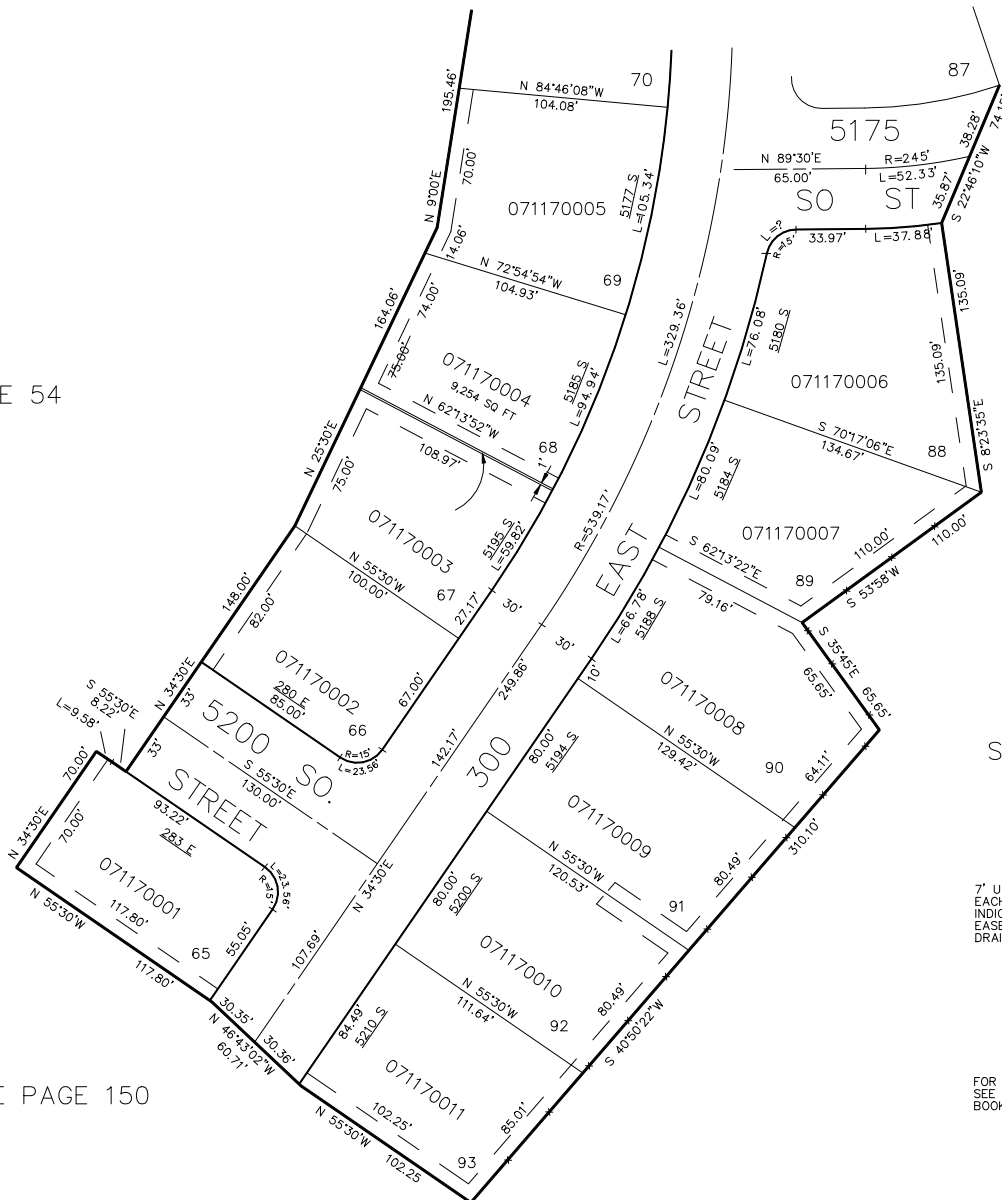
TAXING UNIT: 24

SCALE 1"=50'

117

SEE PAGE 118

SEE PAGE 54



SEE PAGE 53

SEE PAGE 150

7' UTILITY & DRAINAGE EASEMENTS
 EACH SIDE OF PROPERTY LINES AS
 INDICATED BY DASHED LINES. ALL
 EASEMENTS TO BE USED FOR IRRIGATION,
 DRAINAGE & UTILITY PURPOSES.

FOR COMPLETE ENG. DATA
 SEE ORIG. DED. PLAT IN
 BOOK 16 PAGE 15.